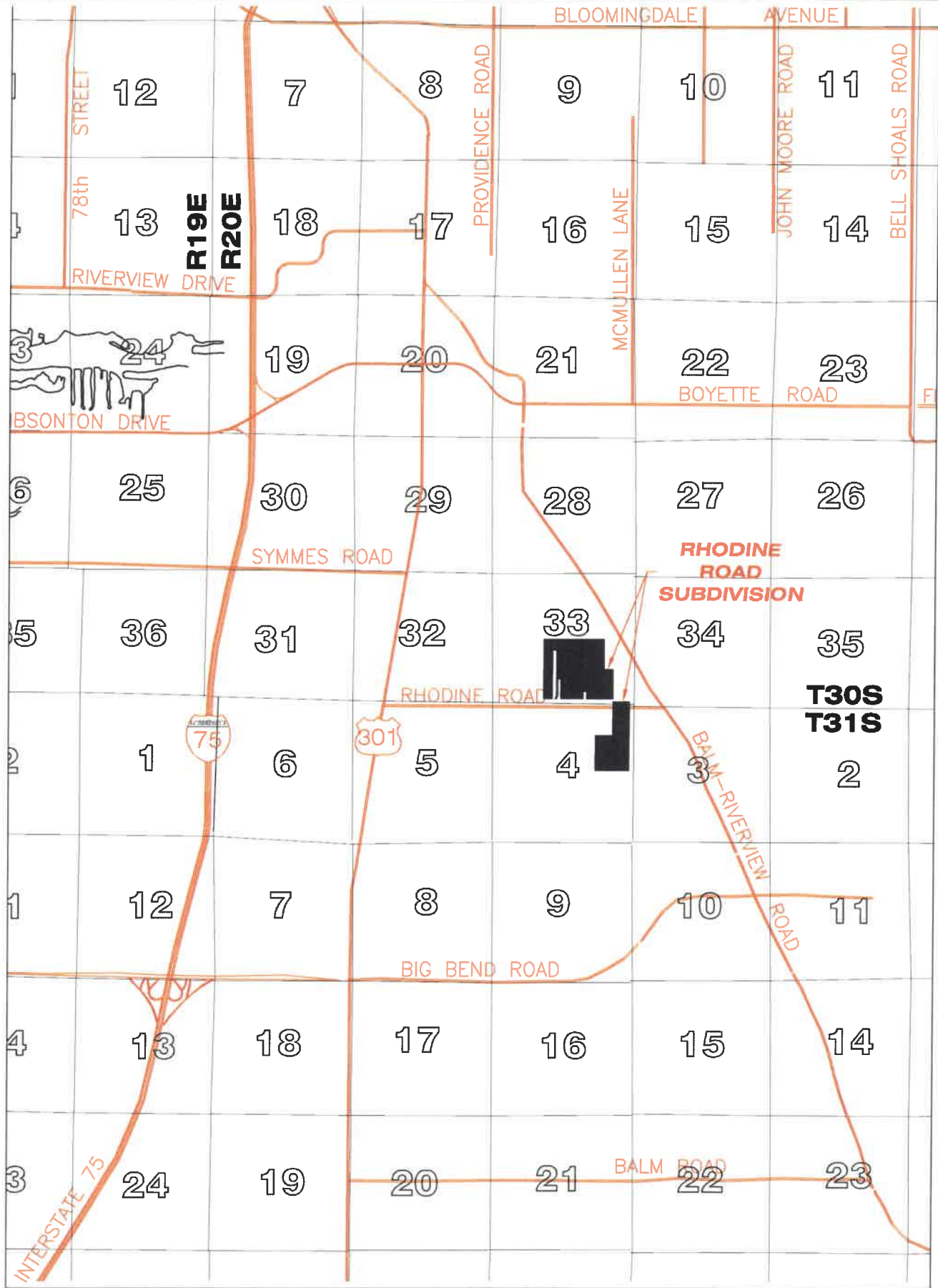


F:\0001 - JMBI Real Estate\0002 Rhodine Rd Properties\ENR\Vector\ DWG\000 Exhibit\LOCATIONMAP_COLE.dwg (LOCATION-MAP) Rev: Aug 22, 2019 - 11:38am



ABSOLUTE ENGINEERING, INC.
 (813) 221-1516 TEL 1000 N. ASHLEY DRIVE, SUITE 925
 (813) 344-0100 FAX C.A. NO. 28358 TAMPA, FLORIDA 33602

**LOCATION MAP
 RHODINE ROAD NORTH CDD**

SEC TWP RGE
33-30S-20E

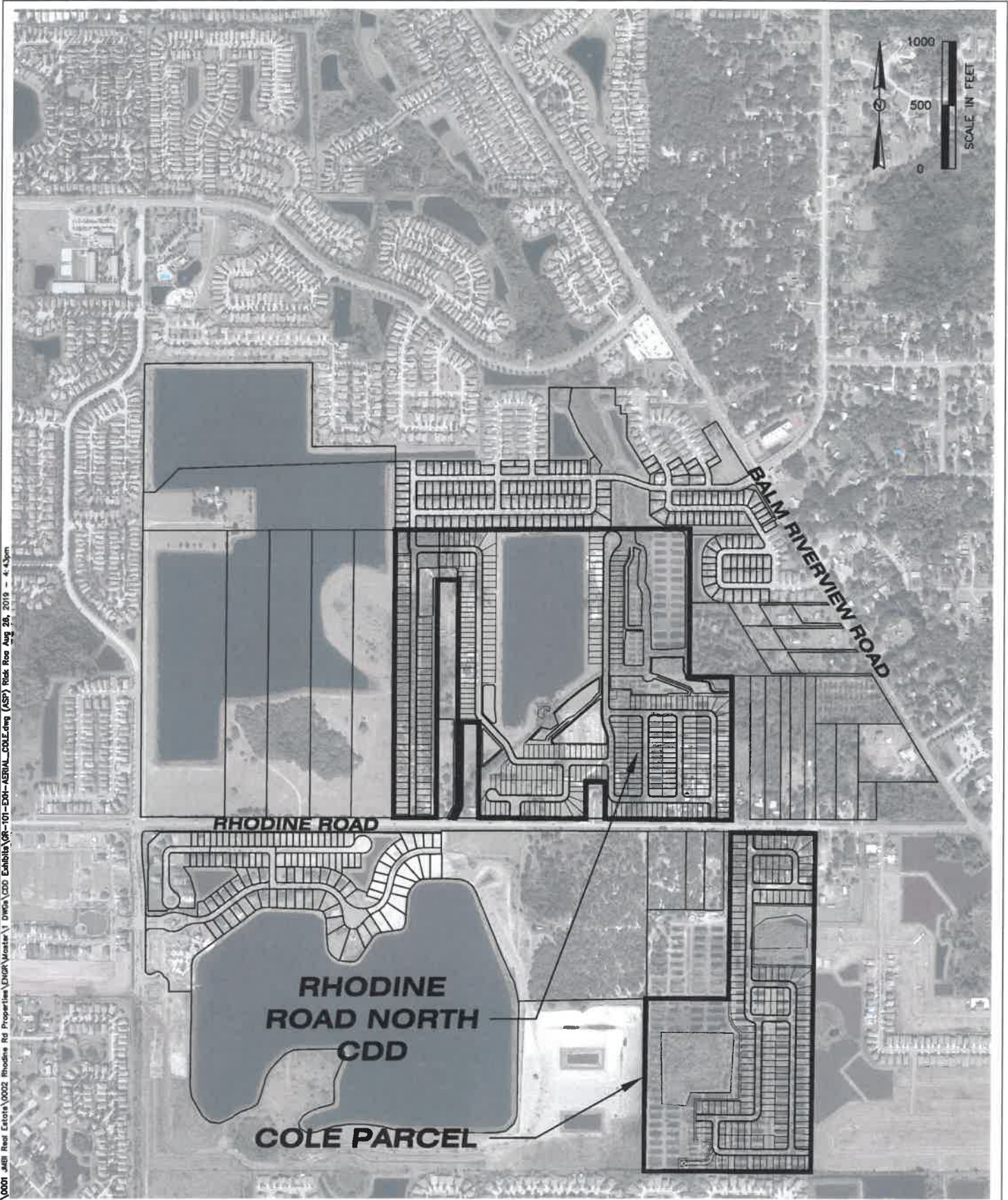
JOB NUMBER
0001.0002

DRAWN BY
ROA

DATE
08-22-2019

SHEET
1

P:\0001_JAB\Real Estate\0002_Rhodine Rd Properties\ENGR\Water\DWG\CDD Exhibit\GR-101-B04-AERIAL_COLE.dwg (ASP) Risk Rec Aug 28, 2019 - 4:43pm



ABSOLUTE ENGINEERING, INC.

(813) 221-1516 TEL 1000 N. ASHLEY DRIVE, SUITE 925
 (813) 344-0100 FAX C.A. NO. 28358 TAMPA, FLORIDA 33602

**AERIAL SITE PLAN
 RHODINE ROAD NORTH CDD**

SEC TWP RGE 33-30S-20E	JOB NUMBER 0001.0002	DRAWN BY ROA	DATE 08-26-2019	SHEET 1
----------------------------------	--------------------------------	------------------------	---------------------------	-------------------